

Brookfield

Models and Pricing

The Alexandria.....\$384,900

Two story colonial – 2,750 sq. ft. 4 bedrooms, 2 ½ bathrooms, eat-in kitchen, formal dining room and living room, family room, and separate study, full basement with egress window, two car garage, and brick front.

The Cambridge.....\$389,900

Two story colonial – 2,688 sq. ft. 4 bedrooms, 2 ½ bathrooms, first floor master suite, two story family room, eat-in kitchen, formal dining room, full basement with egress window, two car garage, and partial stone front.

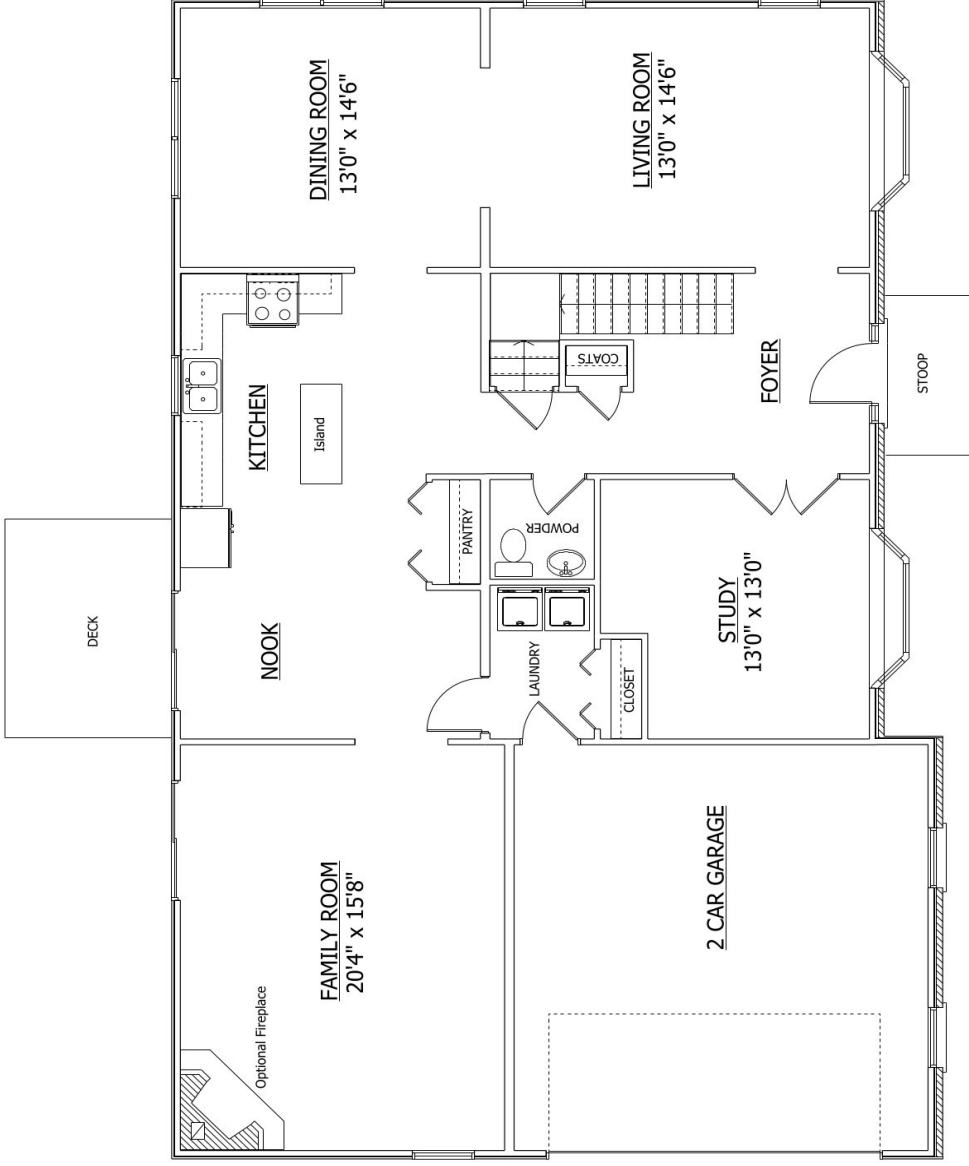


LENAPE BUILDERS
www.lenapebuilders.net

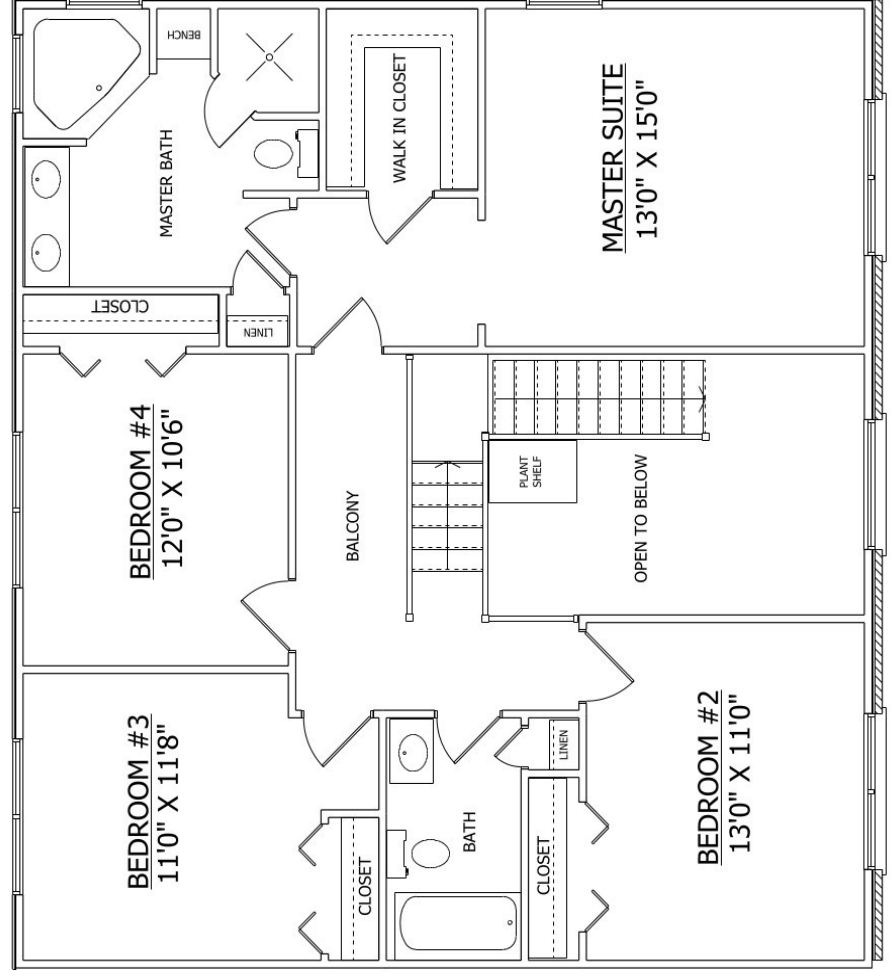


The Alexandria





FIRST FLOOR



SECOND FLOOR

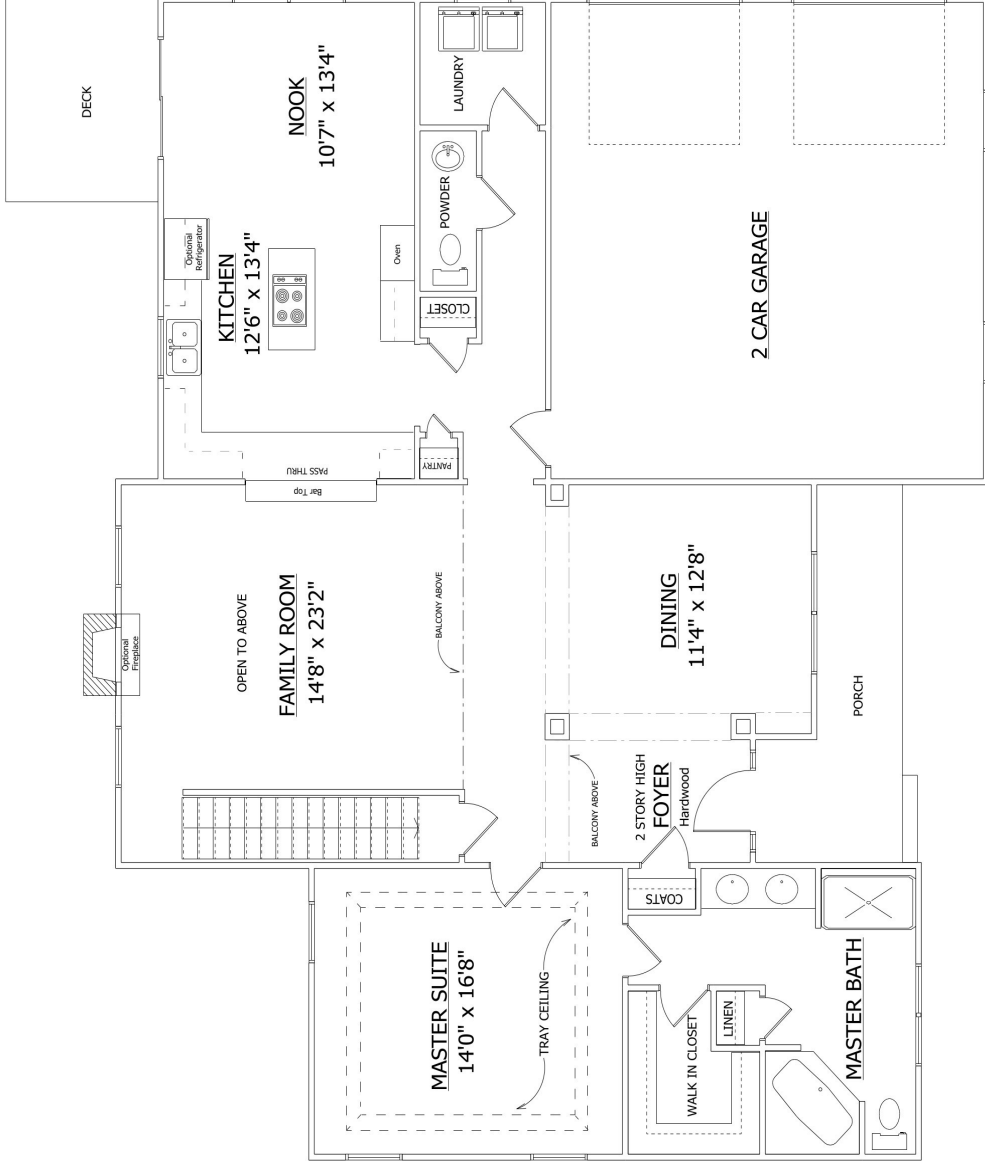
Optional Brick Shown on Front Elevation

ALL MEASUREMENTS ARE APPROXIMATE AND PLANS ARE SUBJECT TO CHANGE

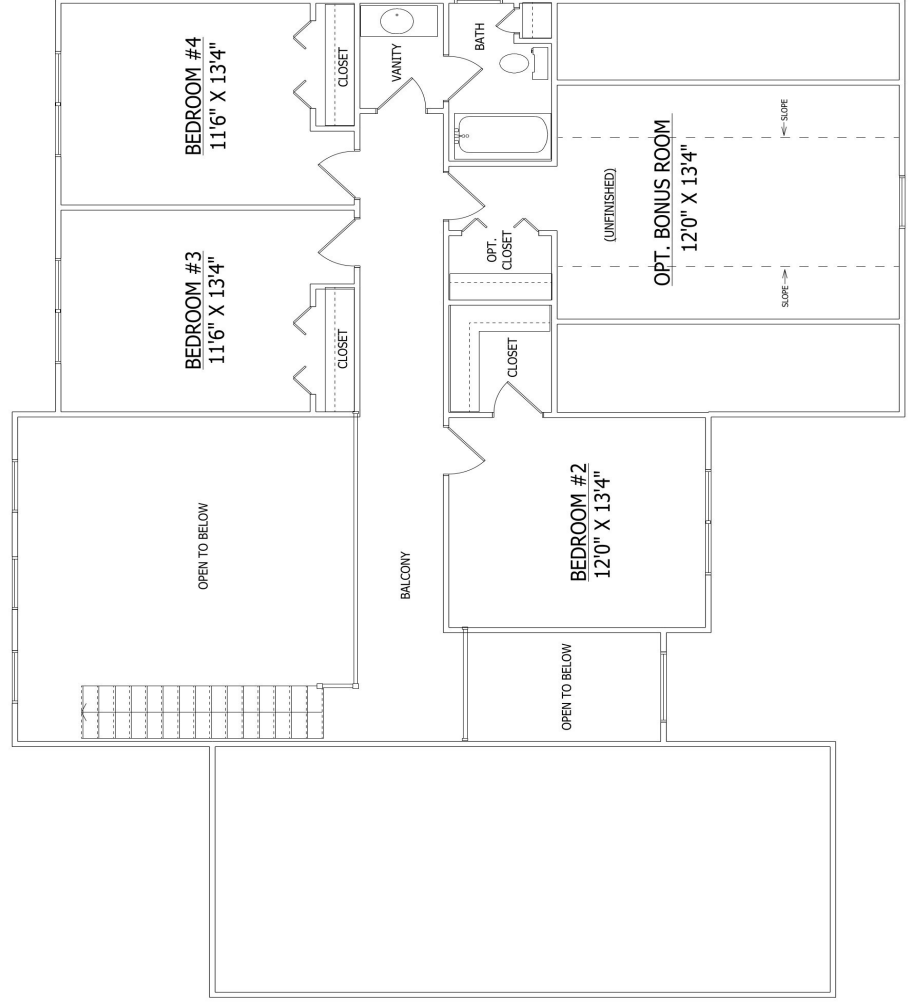


The Cambridge





FIRST FLOOR

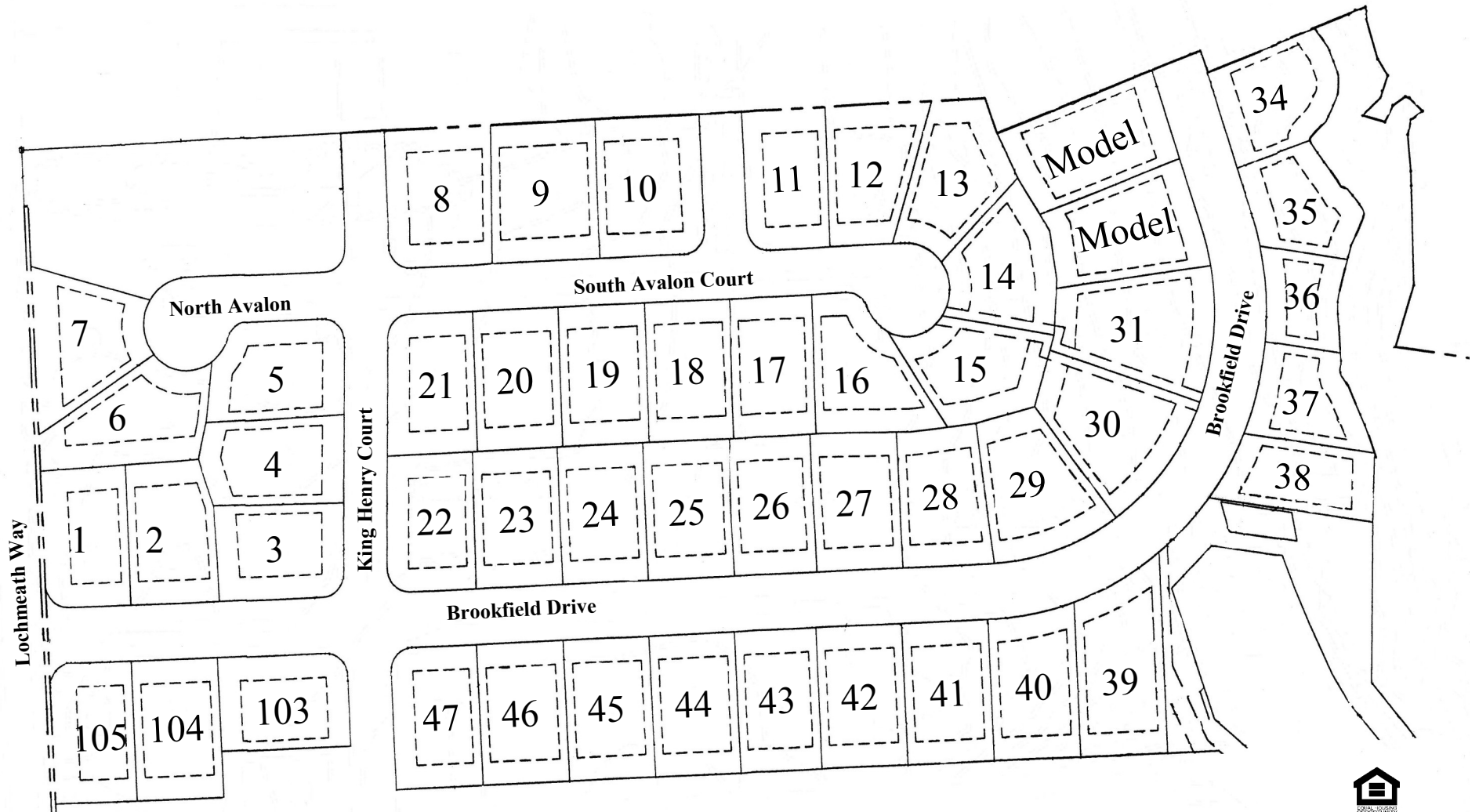


SECOND FLOOR

Optional Stone Shown on Front Elevation
 ALL MEASUREMENTS ARE APPROXIMATE AND PLANS ARE SUBJECT TO CHANGE



Brookfield Site Plan



LENAPE BUILDERS

www.lenapebuilders.net

Brookfield

Standard features

Low Maintenance Exterior

Beaded 6 1/2" vinyl siding
Aluminum clad rake and fascia boards
Seamless aluminum gutters
Single hung tilt-in vinyl framed windows
Vinyl front porch railings and posts (per plan)
Exterior house wrap
Sodded front and seeded rear yard
Composite rear decks

Interior Features

Granite kitchen countertops
Wolf 42" raised panel maple cabinets
Stainless steel kitchen sink
Pull-out sprayer faucet
Garbage disposal
Kenmore appliance package that includes:
 Smooth top electric range
 Microwave with ext. hood
 Dishwasher
Bruce hardwood flooring in foyer
Mohawk carpet with 1/2" padding
Congoleum vinyl flooring
Satin nickel fixtures and hardware
Comfort height bathroom vanities
Cultured mable bathroom countertops
Two panel interior doors

9' Interior ceilings on 1st floor
Ceiling fans prewired throughout

Tiled flooring in kitchens and bathrooms
Tiled master shower and garden tub surround

Energy Efficient

Low-E insulated windows
High efficiency 14 SEER electric heat pump
2x6 Exterior walls
R-49 Ceiling insulation
R-21 Wall insulation
Natural gas heat w/ central air
50 Gallon electric heat pump

Construction Details

On-site stick built construction
30 Year architectural fiberglass shingles
Poured concrete foundation walls
Sump pump
Steel I-beam structural supports
Engineered floor and roofing system
Wood sheathed exterior walls
Two car garage (side entry if lot permits)
Partical brick/ stone facades (per model)

Homesite and Area Information

Public water and sewer
Low property tax rates
No state sales tax
200 AMP electrical service

Peace of Mind

Quality Builders Warranty Corporation's "Builder of Integrity" award winner
10 Year warranty backed by third party warranty provider
Standard emergency egress or daylight window in all basements
Deadbolt entry lock with elegant lever set
Hardwired smoke detectors with battery backup on all floors



Brookfield

Area Information

Schools

General Information	302-698-4800
Star Hill Elementary	302-697-6117
George Welch Elementary	302-674-9080
DAFB Middle	302-674-3284
Fred Fifer Middle	302-698-8400
Caesar Rodney High	302-697-2161

Libraries

Kent County Library	302-736-2265
---------------------	--------------

Public Services

Dover Police	302-736-7111
Camden-Wyoming Fire Co.	302-697-3201
Kent General Hospital	302-674-4700

Major Roads

Route 1	8 minutes
Route 13	3 minutes

Utilities

Tidewater	877-720-9272
Kent County Sewer	302-744-2391
Delmarva Power	800-375-7117
Chesapeake Gas	302-734-6700

Recreation

State Parks	302-739-4702
Kent County Parks	302-736-2090

Shopping

Dover Mall
Wal-Mart Supercenter



LENAPE BUILDERS
www.lenapebuilders.net

